

- ▶ FIRE ALARM SYSTEM
- ▶ GAS ALARM SYSTEM
- ▶ CCTV SYSTEM
- ▶ ACCESS CONTROL SYSTEM
- ▶ EMERGENCY ANNOUNCEMENT SYSTEM
- ▶ EMERGENCY LIGHTING SYSTEM
- ▶ PARKING GARAGE CO SYSTEM
- ▶ WATER-LEAKAGE ALARM SYSTEM
- ▶ INTRINSICALLY SAFE SYSTEM
- ▶ BSM INTEGRATION SYSTEM
- ▶ AMC REMOTE MONITORING SYSTEM

- ▶ Finder products are manufactured by Italian, British and Turkish know how.
- ▶ Finder products have superior technical features.
- ▶ Finder products are distributed by trained and experienced authorized dealers.
- ▶ Finder products quality have been tested and certified by LPCB, BSI, VDS and GOST certifications.
- ▶ Finder products guarantee customer satisfaction by 7/24 electronic monitoring service.



bsi.



Đedal



EVPU®



Sustainable
Enterprise



Certified
Products



Complete
Solution



Satisfaction
Guarantee



Competitive
Products

25

Years
Experience



Superior
Products

04	1000 SERIES CONVENTIONAL FIRE ALARM SYSTEM
05	600 SERIES CONVENTIONAL FIRE ALARM SYSTEM
06	200 SERIES ADDRESSABLE FIRE ALARM SYSTEM
08	300 SERIES WIRELESS FIRE ALARM SYSTEM
10	200 SERIES FIRE ALARM PANELS
12	MULTI SERIES FIRE AND GAS ALARM SYSTEM
13	500 SERIES ADDRESSABLE FIRE ALARM SYSTEM
14	EMERGENCY ANNOUNCEMENT SYSTEM
16	AUTOMATIC EXTINGUISHING SYSTEM
17	INTRINSICALLY SAFE SYSTEM
18	ACCESS CONTROL SYSTEM
20	BSM INTEGRATION SYSTEM
21	AMC REMOTE MONITORING SYSTEM
22	CERTIFICATES
23	REFERENCES

1000 SERIES CONVENTIONAL FIRE ALARM SYSTEM



Conventional Fire Panel FF CF 404 FF CF 408

- ▶ 4 and 8 zone options
- ▶ Modern design with microprocessor base
- ▶ Supports 32 conventional smoke and or heat detectors for each zone
- ▶ Fault and alarm indications for each fire zone
- ▶ EN54-2 and EN54-4 Standard
- ▶ CPR Certificated



Electronic Sounder and Beacon FF ESF101

- ▶ 24V, 30.1mA current consumption
- ▶ Red and white option
- ▶ Fire resistant housing
- ▶ Maximum performance with 12 LEDs
- ▶ 4 tones option
- ▶ EN54-3 Standard
- ▶ Shallow base IP43
- ▶ Deep base IP65 versiyon
- ▶ Base locking system



Conventional Optical Smoke Detector FF O1000

- ▶ ASIC and COB technology
- ▶ Auto Calibration
- ▶ Double dust trap
- ▶ 360° view
- ▶ 3 Alarm Level
- ▶ Made in Italy
- ▶ EN54-7 Standard
- ▶ LPCB Approved



Electronic Sounder FF ES101

- ▶ 24V, 10.6mA current consumption
- ▶ 4 tones option
- ▶ Fire resistant housing
- ▶ Red and white body option
- ▶ EN54-3 Standard
- ▶ Shallow base IP43
- ▶ Deep base IP65 versiyon
- ▶ Base locking system



Conventional Heat Detector FF T1000

- ▶ ASIC and COB technology
- ▶ Auto Calibration
- ▶ 360° view
- ▶ Extended temperature range
- ▶ Made in Italy
- ▶ EN54-5 Standard
- ▶ LPCB Approved



Electronic Sounder and Beacon FF ESF102

- ▶ 24V, 37.7mA current consumption
- ▶ Red and white body option
- ▶ 0.5Hz or 1Hz version
- ▶ 32 tones option
- ▶ 3 sound levels
- ▶ EN54-3 and EN54-23 Standard
- ▶ Shallow base IP43
- ▶ Deep base IP65 versiyon
- ▶ Base locking system



Conventional Call Point FF VB 100

- ▶ Maximum current of 3A
- ▶ Maximum voltage of 50V
- ▶ Resettable
- ▶ EN54-11 Standard
- ▶ BSI Approved



Electronic Beacon FF EF102

- ▶ 24V, 20mA current consumption
- ▶ 0.5Hz or 1Hz version
- ▶ EN54-23 Standard
- ▶ Shallow base IP43
- ▶ Deep base IP65 versiyon
- ▶ Base locking system



Relay Detector Base FF BR200

- ▶ Conventional smoke detector with relay output
- ▶ 1A @ 24 VDC Relay



Electronic Sounder ES103

- ▶ 85-265V AC operating range
- ▶ 4 tones option
- ▶ Fire resistant housing
- ▶ Red and white body option
- ▶ EN54-3 Standard
- ▶ Shallow base IP43
- ▶ Deep base IP65 versiyon
- ▶ Base locking system

600 SERIES CONVENTIONAL FIRE ALARM SYSTEM



Conventional Fire Panel FF CF608

- ▶ 8 Zone Conventional Fire Alarm Panel
- ▶ Siren Output for Each Zone
- ▶ Fault Output for Each Zone
- ▶ 2 Units General Alarm Siren Output
- ▶ 1 Alarm Relay and 1 Fault Relay Output
- ▶ 3 Level User Password
- ▶ Evacuation Alarm
- ▶ Walk Test
- ▶ EN54-2 and EN54-4 Standard
- ▶ LPCB Approved
- ▶ CPR Certificated



Duct Type Detector housing FF DC600

- ▶ Addressable and Conventional Detector compatible



Conventional Optical Smoke Detector FF O600

- ▶ 360 ° view
- ▶ Parallel Indicator Connection
- ▶ Non-Polarized Connection
- ▶ Dust Protection
- ▶ Aesthetic Design
- ▶ EN54-7 Standard
- ▶ LPCB Approved
- ▶ CPR Certificated



Battery Powered Smoke Detector FF POD 600

- ▶ Complies with EN 14604.
- ▶ Local test function.
- ▶ Low battery detection.
- ▶ Built in sound with 85 dB.
- ▶ EN 14604 Standard
- ▶ LPCB Approved
- ▶ CPR Certificated



Conventional Optical Smoke Detector FF T600

- ▶ 360 ° view
- ▶ Parallel Indicator Connection
- ▶ Non-Polarized Connection
- ▶ Aesthetic Design
- ▶ EN54-5 Standard
- ▶ LPCB Approved
- ▶ CPR Certificated



Battery Powered Smoke Detector RF Networkable FF POD 600-RF

- ▶ RF linkable, when one alarm, all get alarm
- ▶ 60 meters in open area
- ▶ Power Source: one 9V and 3x1.5V
- ▶ Temperature: -10°~+40°
- ▶ Frequency: 433.92MHZ
- ▶ Alarm decibel: ≥85db/3m
- ▶ Low battery signal
- ▶ Test button
- ▶ EN 14604 Standard
- ▶ LPCB Approved
- ▶ CPR Certificated



Beam Detector FF BD600

- ▶ Wide coverage
- ▶ 5-100 m range.
- ▶ Detector sensitivity adjustable
- ▶ 9.5-28V / 8-30mA
- ▶ EN54-12 Standard
- ▶ LPCB Approved
- ▶ CPR Certificated



Smoke Detector Test Spray FF D-SPR

- ▶ It can simulate smoke in aerosol form.
- ▶ 200 ml.
- ▶ Harmless to health, safety equipment and the environment.
- ▶ Provides faster response time for alarm

200 SERIES ADDRESSABLE FIRE ALARM SYSTEM



Intelligent Addressable Optical Smoke Detector FF O200

- ▶ Stable operation with advanced digital signal processing
- ▶ Automatic compensation
- ▶ Short circuit isolator
- ▶ Double dust trap
- ▶ 360° view
- ▶ Made in Italy
- ▶ EN54-7 and EN54-17 Standard
- ▶ LPCB Approved



Intelligent Addressable Heat Detector FF T200

- ▶ Stable operation with advanced digital signal processing
- ▶ Automatic compensation
- ▶ Short circuit isolator
- ▶ Double dust trap
- ▶ 360° view
- ▶ Extended temperature range
- ▶ Made in Italy
- ▶ EN54-5 and EN54-17 Standard
- ▶ LPCB Approved



Intelligent Addressable Optical and Heat Detector FF OT200

- ▶ Stable operation with advanced digital signal processing
- ▶ Automatic compensation
- ▶ Short circuit isolator
- ▶ Double dust trap.
- ▶ 360° view
- ▶ Extended temperature range
- ▶ Made in Italy
- ▶ EN54-5, EN54-7 and EN54-17 Standard
- ▶ LPCB Approved



Intelligent Addressable Electronic Sounder and Beacon FF ESF100 + FF LX200

- ▶ Maximum performance with high-power LED
- ▶ Red and white LED option
- ▶ Shallow base IP43
- ▶ Deep base IP65 versiyon
- ▶ Base locking system
- ▶ EN54-3 and EN54-23 Standard
- ▶ LPCB Approved



Addressable Call Point FF-VB200

- ▶ Surface mounted and flush mounted
- ▶ Resettable
- ▶ Short circuit isolator
- ▶ Made in Italy
- ▶ EN54-11 and EN54-17 Standard
- ▶ LPCB Approved



Intelligent Addressable Relay Output Module FF MC220

- ▶ 1 output relay
- ▶ Short circuit isolator
- ▶ Made in Italy
- ▶ EN54-18 and EN54-17 Standard
- ▶ VDS Approved



Intelligent Addressable Input / Output Module FF MIC200

- ▶ 1 output / 1 input
- ▶ Short circuit isolator
- ▶ 24V Powered
- ▶ Made in Italy
- ▶ EN54-18 and EN54-17 Standard
- ▶ VDS Approved



Intelligent Addressable Output Module FF MC200

- ▶ 1 output
- ▶ Short circuit isolator
- ▶ 24V Powered
- ▶ Made in Italy
- ▶ EN54-18 and EN54-17 Standard
- ▶ VDS Approved



Intelligent Addressable Input Module FF MI200

- ▶ 1 input contact
- ▶ Short circuit isolator
- ▶ Made in Italy
- ▶ EN54-18 and EN54-17 Standard
- ▶ VDS Approved



Detector Buzzer Socket FF BS200BB

- ▶ 75dB / 3m sound level
- ▶ 5mA alarm

1

2

3

4

5

240

239

238

237

Finder

Finder Intelligent Addressable short circuit isolator opens loop if the cables are shorted

Finder addressable sounders save cabling cost and also give setup flexibility

Finder Call Points are Resettable

Finder addressable detectors have Bi-color LEDs
Red - Alarm
Yellow - Fault
Green - Working

Metal Grid Rosewood Carbon Fibre Walnut Crushed Steel Black Marble Beech White Marble

The diagram illustrates the control panel and its interaction with the detector. On the left is a photograph of the control panel, which features a 7-inch color LCD touch screen and a keypad. Below the panel, a hand icon is shown touching the screen, with the text "Touch Screen 7" Color LCD touch screen". To the right of the panel is a silhouette of a head with gears inside, representing the detector's microcontroller. A red arrow points from the head to the detector, with the text "Detector working parameter can be loaded from the control panel". Below this, another red arrow points from the detector back to the head, with the text "The detector microcontroller decides". On the right is a photograph of the detector, a white circular device with a microcontroller chip on top. Above the detector is a red magnet icon with the text "TEST WITH MAGNET". Below the detector is a red padlock icon with the text "LOCKING".

300 SERIES WIRELESS FIRE ALARM SYSTEM



Wireless Optical Smoke Detector SG100 (L-OP-SG)

- ▶ Two-way communication between receivers
- ▶ 868Mhz frequency
- ▶ Up to 8 years battery life
- ▶ 7 channels
- ▶ High security protocol
- ▶ Intelligent addressable structure
- ▶ Easy setup and installation
- ▶ Double dust trap
- ▶ 360° view
- ▶ LPCB Approved
- ▶ Made in Italy



Wireless System Receiver / Transmitter VW2W100

- ▶ Dual antenna structure Horizontal/Vertical
- ▶ Dual communication protocol between receiver/transmitter
- ▶ 7 channels. Up to 32 connections
- ▶ Fire panel monitoring
- ▶ Easily programmable with special PC software
- ▶ LPCB Approved
- ▶ Made in Italy



Wireless Addressable Heat Detector SG350 (L-HT-SG)

- ▶ Two-way communication between receiver
- ▶ 868Mhz frequency
- ▶ Up to 8 years battery life
- ▶ 7 channels
- ▶ High security protocol
- ▶ Intelligent addressable structure
- ▶ Easy setup and installation
- ▶ Double dust trap
- ▶ 360° view
- ▶ LPCB Approved
- ▶ Made in Italy



Wireless Addressable Input Module SGM1200

- ▶ Two-way communication between receiver
- ▶ 868Mhz frequency
- ▶ High security protocol
- ▶ Intelligent addressable structure
- ▶ Easy setup and installation
- ▶ Two-color status LED
- ▶ LPCB Approved
- ▶ Made in Italy



Wireless Optical Smoke Heat Detector SG200 (L-MC-SG)

- ▶ Two-way communication between receiver
- ▶ 868Mhz frequency
- ▶ 7 channels
- ▶ Up to 8 years battery life
- ▶ High security protocol
- ▶ Intelligent addressable structure
- ▶ Easy setup and installation
- ▶ Double dust trap
- ▶ 360° view
- ▶ LPCB Approved
- ▶ Made in Italy



Wireless Addressable Output Module SGM200

- ▶ Two-way communication between receiver
- ▶ 868Mhz frequency
- ▶ High security protocol
- ▶ Intelligent addressable structure
- ▶ Easy setup and installation
- ▶ Two-color status LED
- ▶ LPCB Approved
- ▶ Made in Italy



Wireless Addressable Call Point SGCP100

- ▶ Two-way communication between receiver
- ▶ 868Mhz frequency
- ▶ Up to 8 years battery life
- ▶ High security protocol
- ▶ Intelligent addressable structure
- ▶ Easy setup and installation
- ▶ Resettable
- ▶ Two-color status LED
- ▶ LPCB Approved
- ▶ Made in Italy



Wireless Optical Smoke Detector SG100-IS

- ▶ Intrinsically Safe areas
- ▶ Two-way wireless communication
- ▶ Up to 8 years battery life
- ▶ 360° viewing angle
- ▶ EN54-5, EN54-7 and EN54-25 certified
- ▶ LPCB Approved
- ▶ ATEX certified



Wireless Addressable Alarm Sounder SGRS100

- ▶ Two-way communication between receiver
- ▶ 868Mhz frequency
- ▶ Up to 8 years battery life
- ▶ High security protocol
- ▶ Intelligent addressable structure
- ▶ Easy setup and installation
- ▶ 100dB sound level
- ▶ LPCB Approved
- ▶ Made in Italy



Wireless Fire Alarm Call Point SGCP100-IS

- ▶ Intrinsically Safe areas
- ▶ Two-way wireless communication
- ▶ Up to 8 years battery life
- ▶ Resettable
- ▶ EN54-11 and EN54-25 certified
- ▶ LPCB Approved
- ▶ ATEX certified

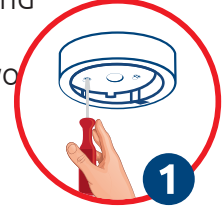


► Flexible Loop Structure

It is the solution for every location where fire detection system is not an option and where cabling is a problem. The wireless system is the best solution for historical buildings. It brings a lot of aesthetic solutions. For existing building it is a save if you want to add fire detection system. With a rise of price in the cable industry the wireless solutions brings a lot of saves.

► High Performance

In accordance to PREN54:25 it has 7 channels at 868MHz
 High speed communication capacity
 Programmable sensitivity level
 200m communication distance in open air
 Easy installation
 Battery-powered sirens alarms
 2 life-time batteries
 Analog values can be seen on the control panel
 Online W2W receiver
 Reliable communication with W2W receiver with dual antenna
 Ability to connect to 32 devices to W2W receiver
 Possibility to reach a total distance of 1500m with 16 radio enhancers
 High noise suppression
 Detector warns when removed from socket
 Easy testing and commissioning with signal tester tool



► Detectors are Aesthetics



Metal Grid



Rosewood



Carbon Fibre



Walnut



Brushed Steel



Black Marble

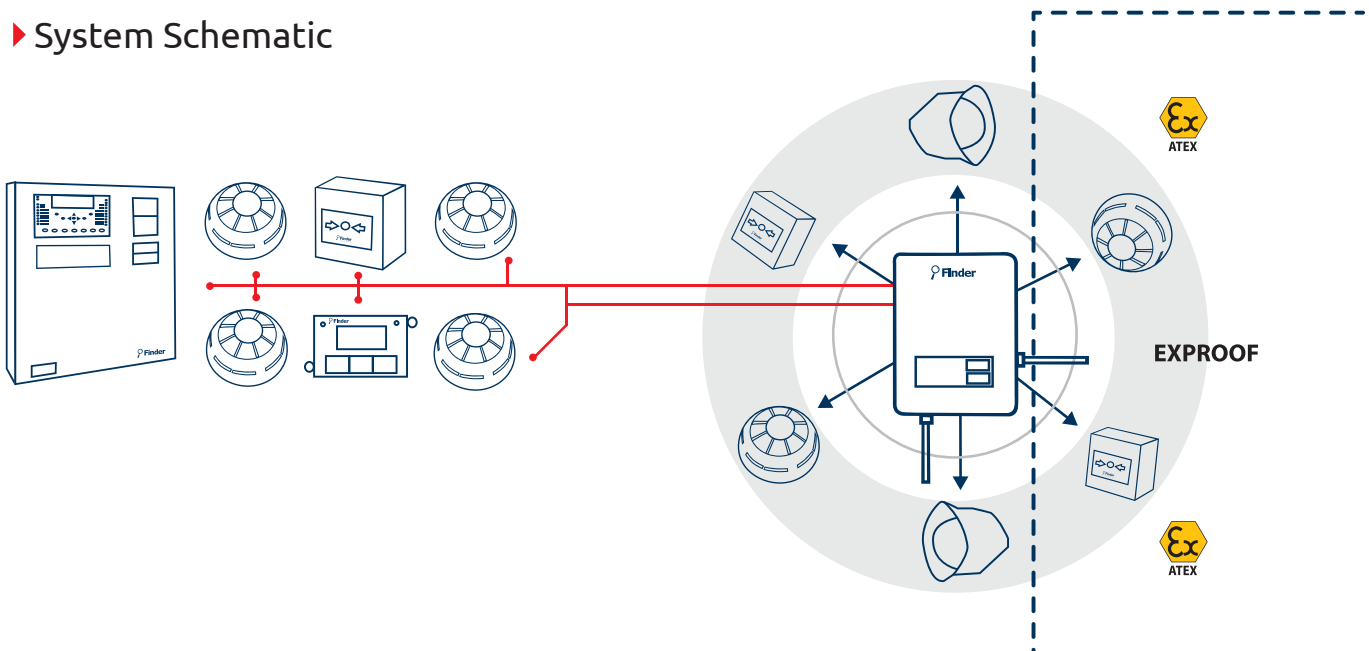


Beech



White Marble

► System Schematic



200 SERIES FIRE ALARM PANELS



bsi.

Intelligent Addressable Fire Alarm Control Panel FF SYN1L-N

- ▶ 1 loop version
- ▶ 2 programmable sounder outputs
- ▶ 3 programmable relays
- ▶ Up to 64 panels network
- ▶ BSI Approved
- ▶ 240 addressable devices for each loop
- ▶ 1000m loop length
- ▶ Made in UK



bsi.

Intelligent Addressable Fire Alarm Control Panel FF SYN2L

- ▶ 2 loop version
- ▶ 2 programmable sounder outputs
- ▶ 3 programmable relays
- ▶ Up to 64 panels network
- ▶ BSI Approved
- ▶ 240 addressable devices for each loop
- ▶ 1000m loop length
- ▶ Made in UK



Intelligent Addressable Fire Alarm Control Panel FF TAK-2L, FF TAK-4L FF TAK-6L, FF TAK-8L

- ▶ EN54-2 and EN54-4 Approved
- ▶ 7" touch color screen
- ▶ 4 programmable sounder outputs
- ▶ 10000 event registration
- ▶ 240 addressable devices for each loop
- ▶ 2-4-6-8 loop capacity
- ▶ Programmable fire and fault relays
- ▶ Made in UK



Intelligent Addressable Fire Alarm Control Panel FF TAK-10L, FF TAK-12L FF TAK-14L, FF TAK-16L

- ▶ EN54-2 and EN54-4 Approved
- ▶ 7" touch color screen
- ▶ 4 programmable sounder outputs
- ▶ 10000 event registration
- ▶ 240 addressable devices for each loop
- ▶ 10-12-14-16 loop capacity
- ▶ Programmable fire and fault relays
- ▶ Made in UK



Repeater Panel FF Focus

- ▶ Large graphic display
- ▶ Easy connection with Finder Network
- ▶ Small durable case
- ▶ Easy setup
- ▶ Fire contacts in case of alarm faults
- ▶ FF Focus +
- ▶ Silent alarm
- ▶ Made in UK



Repeater Panel FF TAK-REP-S

- ▶ 7" touch screen
- ▶ Easy monitoring and intervention
- ▶ Flexible Configuration
- ▶ Made in UK



Repeater Panel FF View

- ▶ Large graphic display
- ▶ Built-in buzzer
- ▶ 750mA
- ▶ Easy monitoring and intervention
- ▶ 24V DC or 230V AC options
- ▶ Made in UK



Loop Card FF-TAK-LOOP-HOC

- ▶ EN54-2 and EN54-4 compliant
- ▶ Hochiki protocol loop card
- ▶ 2 loop x 126 addressable



Network Card FF K555

- ▶ Supports up to 64 panels
- ▶ High protocol integration
- ▶ Fully secured against short circuits
- ▶ Easy monitoring and intervention
- ▶ Flexible configuration
- ▶ Made in UK



Loop Card FF-TAK-LOOP-APO

- ▶ EN54-2 and EN54-4 compliant
- ▶ Apollo protocol loop card
- ▶ 2 loop x 127 addressable

200 SERIES FIRE ALARM PANELS



**EVPU
EN54**

Intelligent Addressable Fire Alarm Control Panel FF ONE-1L

- ▶ 1 addressable loop digital protocol
- ▶ 240 addressable devices for each loop
- ▶ Touch screen (480x272 TFT 4.3")
- ▶ Loop short-circuit protection
- ▶ 14 front LED
- ▶ EN54-2 and EN54-4 Standard
- ▶ Made in Italy



Remote Control Touch Panel for ONE KBD

- ▶ Graphic touch screen (480x272 TFT 4.3")
- ▶ 14 front LED
- ▶ 2 RS 485 connection
- ▶ 1 RS 232 / micro USB for programming
- ▶ Operating Temperature: 5° C / + 40° C.
- ▶ Power supply: 24Vdc
- ▶ Power consumption: 100mA



**EVPU
EN54**

Intelligent Addressable Fire Alarm Control Panel FF ONE-3L

- ▶ 3 addressable loop digital protocol
- ▶ 240 addressable devices for each loop
- ▶ Touch screen (480x272 TFT 4.3")
- ▶ Loop short-circuit protection
- ▶ 14 front LED
- ▶ EN54-2 and EN54-4 Standard
- ▶ Made in Italy



Region LED for ONE 56

- ▶ Field card for alarm status management
- ▶ 56 LED area
- ▶ Operating Temperature: 5° C / + 40° C
- ▶ Dimensions: 219x58mm



**EVPU
EN54**

Intelligent Addressable Fire Alarm Control Panel FF ONE-9L

- ▶ 9 addressable loop digital protocol
- ▶ 240 addressable devices for each loop
- ▶ Touch screen (480x272 TFT 4.3")
- ▶ Loop short-circuit protection
- ▶ 14 front LED
- ▶ EN54-2 and EN54-4 Standard
- ▶ Made in Italy



MODBUS Protocol Converter

- ▶ Controlled microprocessor unit 133 MHz
- ▶ 32Mbytes Flash - Can be increased to 64Mbytes
- ▶ 32Mbytes Ram - Can be increased to 64Mbytes
- ▶ Embedded operating system
- ▶ Network interface card Ethernet 10 100 Base T Integrated
- ▶ To interface with central IEC 79/5 - 79/6
- ▶ 1 RS232 serial line protocol
- ▶ Internal battery support
- ▶ Power Source: 12Vdc
- ▶ Power Consumption: 480 mA



Loop Expansion Card

- ▶ 2-loop expansion card for Teledata One
- ▶ 240 addressable devices for each loop



VdS

Fire Alarm Control Panel FF MX1-1

- ▶ 1 loop version
- ▶ 2 programmable sounder outputs
- ▶ Large graphic display
- ▶ Help and alert screens
- ▶ Programmable Board Relay
- ▶ 4 front panel LEDs
- ▶ Printer (optional)
- ▶ Easy installation
- ▶ Made in UK



Network Card

- ▶ CAN BUS connection
- ▶ Control panel up to 32 on the network
- ▶ Up to 50 Kbps data transmission
- ▶ Fault-tolerant connection, in case of error, the necessary connection is made by connecting the ring
- ▶ Cable length up to 1.2Km
- ▶ Consumption: 250mA max



VdS

Fire Alarm Control Panel FF MX4-4

- ▶ 4 loop version
- ▶ 4 programmable sounder outputs
- ▶ Large graphic display
- ▶ Help and alert screens
- ▶ Programmable Board Relay
- ▶ 4 front panel LEDs
- ▶ Printer (optional)
- ▶ Easy installation
- ▶ Made in UK

MULTI SERIES FIRE AND GAS ALARM SYSTEM



EVPU
EN54

Multi Series Addressable Gas Alarm Panel GF240 GF480

- ▶ Gas alarm panel with 1/2 loop address
- ▶ 240/480 addressable
- ▶ Pre-alarm output for each zone
- ▶ Alarm output
- ▶ Fault output
- ▶ Monitored sounder output
- ▶ EN54-2 and EN54-4 Standard
- ▶ Made in Italy



Multi Series Conventional Gas Alarm Panel CF404 K - CF408 K

- ▶ 4 / 8 areas
- ▶ Pre-alarm output for each zone
- ▶ Output Alarm Relay for each zone
- ▶ Alarm output
- ▶ Fault output
- ▶ Monitored sounder output



Multi Series Addressable LPG / Methane Gas Detector GF 1224 LM-AD

- ▶ IP2X protection
- ▶ Alarm, Fault and Stand by LED alerts
- ▶ Aesthetic design for ceiling and wall mounting
- ▶ Buzzer sound warning
- ▶ Test button
- ▶ Addressable



Multi Series Conventional LPG / Methane Gas Detector GF 1224 LM

- ▶ IP2X protection
- ▶ Aesthetic design for ceiling and wall mounting
- ▶ Alarm, Fault and Stand by LED alerts
- ▶ Buzzer sound warning
- ▶ Test button
- ▶ Relay Output



Multi Series Addressable CO Gas Detector GF 1224CO-AD (12-24V DC)

- ▶ IP55 protection
- ▶ CO gas detection
- ▶ 2 Different level alarm outputs
- ▶ 3 Different CO level detection (30, 60, 150 ppm)
- ▶ Addressable



Multi Series Conventional CO Gas Detector GF-1224CO (12-24VDC)

- ▶ IP55 protection
- ▶ Aesthetic design for ceiling and wall mounting
- ▶ CO gas detection
- ▶ 2 different level alarm outputs
- ▶ 3 different CO level detection (30, 60, 150ppm)



Multi Series Water-leakage Detector WF 1224 Conventional WF 1224-AD Addressable

- ▶ Design for humid environments
- ▶ Conventional and addressable option
- ▶ Relay output



Multi Series Parallel Notification LED FF LED

- ▶ Suitable for wall and ceiling mounting
- ▶ Suitable for recessed and surface mounting



Multi Series Addressable Module GF I/O MODULE

- ▶ 1 output / 1 input
- ▶ Short circuit isolator
- ▶ 24V Powered
- ▶ VDS Approved



Multi Series Emergency Lighting Unit PF 6000 LF 4000

- ▶ The circuit is specially design for temperature and voltage fluctuations
- ▶ Homogeneous light fluctuations with high durable polycarbonate diffuser
- ▶ Long battery life with low current charging
- ▶ Double Side / Single Side
- ▶ 3 Hours

500 SERIES FIRE ALARM SYSTEM



Intelligent Addressable Fire Alarm Panel FF FCP500

- ▶ 7" Color LCD Display
- ▶ 1-4 Loop Options
- ▶ 255 Loop address capacity
- ▶ 48 LED Display
- ▶ 2 Sounder Output
- ▶ Alarm- Fault Relay Output
- ▶ RS232-RS485-CAN-USB Interface Communication
- ▶ EN54-2 ve EN54-4 Certified
- ▶ 1000 Event Memory
- ▶ LPCB Approved
- ▶ CPR Certificated

FF FCP500-L

- ▶ Loop Card,
- ▶ 255 Loop address capacity

FF FCP500-P

- ▶ Printer
- ▶ Internal Type Printer

FF FCP500-N

- ▶ Network Card
- ▶ Network Maximum 32 Panel



Intelligent Addressable Optical Smoke Detector FF O500

- ▶ Microprocessor Based
- ▶ Non-polarized two-wire connection
- ▶ EN54-7 Standard
- ▶ LPCB Approved
- ▶ Gost Approved
- ▶ CPR Certified



LCD Repeater Panel

FF FCP500-R

- ▶ Repeater Panel for FCP500
- ▶ LCD Display



Intelligent Addressable Heat Detector FF T500

- ▶ Microprocessor Based
- ▶ Fixed and rate of rise temperature
- ▶ Non-polarized two-wire connection
- ▶ EN54-5 Standard
- ▶ LPCB Approved
- ▶ Gost Approved
- ▶ CPR Certified



Intelligent Addressable LPG / Methane Gas Detector FFLPG500

- ▶ IP2X protection
- ▶ Aesthetic design for ceiling and wall mounting
- ▶ Alarm, Fault and Stand by LED alerts
- ▶ Buzzer sound warning
- ▶ Test button
- ▶ Relay Output



Intelligent Addressable CO Gas Detector FFCO500 (12-24VDC)

- ▶ IP55 protection
- ▶ Aesthetic design for ceiling and wall mounting
- ▶ CO gas detection
- ▶ 2 different level alarm outputs
- ▶ 3 different CO level detection (30, 60, 150ppm)



Intelligent Addressable Call Point FF CP500

- ▶ Resettable
- ▶ Non-polarized two-wire connection
- ▶ LED Indicator
- ▶ EN54-11 Standard
- ▶ LPCB Approved
- ▶ Gost Approved
- ▶ CPR Certificated



Intelligent Addressable Sounder and Beacon FF LSB550

- ▶ Non-polarized two-wire connection
- ▶ 24 VDC supply
- ▶ EN54-3 Standard
- ▶ LPCB Approved
- ▶ Gost Approved
- ▶ CPR Certificated



Intelligent Addressable Water-leakage Detector FF WL500

- ▶ Design for humid environments
- ▶ Conventional and addressable option
- ▶ Relay output



Handheld Encoder FF HP500

- ▶ LCD and English display
- ▶ Battery management function
- ▶ Complete encoding within a second



Intelligent Addressable I / O Module FF MIC500

- ▶ 1 Input and 1 Output
- ▶ Non-polarized two-wire connection
- ▶ LED Display
- ▶ 24 VDC Supply
- ▶ EN54-18 Standard
- ▶ LPCB Approved
- ▶ Gost Approved
- ▶ CPR Certificated



Short Circuit Loop Isolator FF LI500

- ▶ Non-polarized two-wire connection
- ▶ LED Display

EMERGENCY ANNOUNCEMENT SYSTEM



EN54-16

8-band PAVA Evacuation System FF VA-6200MA

- ▶ 8 Zone 500w Amplifier
- ▶ Broadcast over 8 channels voice messages for 8 zones at the same time
- ▶ Real-time fire alarm zone and speaker zone status integration
- ▶ 8 programmable voicemail triggers
- ▶ 8 pre-defined voice messages recorded to automatically defined zones



EN54-16

Microphone Console FV VA-6200RM

- ▶ Microphone output level + - 3dB
- ▶ Real time PAVA, zone system status display
- ▶ PAVA remote control and management
- ▶ Programmable control priorities
- ▶ One-touch zone selection
- ▶ Microphone output level, power gain
- ▶ Parallel transmission
- ▶ 8 Zones



EN54-16

8-band PAVA Router FF VA-6200MS

- ▶ 8-band 500w Amplifier Router
- ▶ PAVA Extension Unit
- ▶ 8 Ignition Alarm Out
- ▶ 8 Contact Alarm Input



Microphone Console FV VA-6000 RM

- ▶ Microphone output level + - 3dB
- ▶ Real time PAVA, zone, system status display
- ▶ PAVA remote control and management
- ▶ Programmable control priorities
- ▶ One-touch zone selection
- ▶ Microphone output level, power gain
- ▶ Parallel transmission
- ▶ Convenient and simple expandable, each expansion unit has 8 zones



DC Backup Power Supply FV VA-6000BC

- ▶ Automatic charging mode
- ▶ Discharged batteries protection
- ▶ Battery failure monitoring
- ▶ Overcharging, overheating, excessive input voltage monitoring
- ▶ Automatically put the fan on on overheating
- ▶ Battery capacity change without changing
- ▶ AC voltage



EN54-24

Ceiling Speaker FV HF-606 Fireproof

- ▶ Built-in 100V / 70V transformer
- ▶ 5" - 6" Fireproof speaker - options from 0.75W to 9W
- ▶ Ceramic connector
- ▶ Thermal fuse
- ▶ Fire-resistant rear housing
- ▶ Fire resistant cable



EN54-24

Ceiling Speaker FV HF-565/575/585 Fireproof

- ▶ Built-in 100V / 70V transformer
- ▶ 5 " - 6" Fireproof speaker - 0,38W - 0,75W - 1,5W - 3W - 6W
- ▶ Ceramic connector
- ▶ Thermal fuse
- ▶ Fire-resistant rear housing
- ▶ Fire resistant cable



EN54-24

Wall Mount Speaker FV H-700

- ▶ Built-in 100V / 70V transformer
- ▶ Two way speaker unit
- ▶ 1,5W - 3W - 6W - 12W - 40W
- ▶ Wall mounting
- ▶ Metal grille and ABS enclosure



EN54-24

Projector Outdoor Speaker FV-H-570

- ▶ Built-in 100V / 70V transformer
- ▶ Projector-type Fireproof
- ▶ 15W
- ▶ Outdoor installation
- ▶ RAL9016 white



Volume Control Unit FV VC 6 FV / FV VC 60 FC FV VC 200 FC / FV VC 30 FC FV VC 120 FC

- ▶ Non-relay option FV VC XXX
- ▶ ABS or metal box option Relative Volume Control
- ▶ 6 volume control, 6 Watt, relay
- ▶ 30 volume control, 30 Watt, relay
- ▶ 60 volume control, 60 Watt, relay
- ▶ 120 volume control, 120 Watt, relay
- ▶ 200 volume control, 200 Watt, relay

EN54-16 Central Device Failure Monitoring

- ▶ Microprocessor Registration
- ▶ Warning Trigger Inputs
- ▶ Firefighter Microphone Input
- ▶ 1000 Event Recording
- ▶ Music Broadcasting
- ▶ 8, 16, 32, 64 Zones Evacuation
- ▶ Spare Amplifier
- ▶ Supervised Speaker Line
- ▶ Spare Power Supply
- ▶ Fire Brigade and Emergency Announce



EN54-24 Speaker Volume Adjustment Devices

- ▶ Ceramic Terminals
- ▶ Thermal fuse
- ▶ Fire Resistant Cables
- ▶ Fire Resistant Rear Cover
- ▶ Surface flush Model
- ▶ Surface Mounted Model
- ▶ Outdoor Speaker
- ▶ Volume Control Devices



Modular Structure
Ability to answer all expectations



User friendly
Easy to use in emergency situations



LAN Integration
Integration to building management systems



Quick Maintenance
Remote monitoring and diagnostics feature

- ▶ FF XT Fire Control Panel
- ▶ EN12094-1, EN54-2 and EN54-4 Certified
- ▶ 3 Standard Detection Zone
- ▶ Any zone can be configured from any region combination
- ▶ Programmable first level siren delays
- ▶ Programmable detection delays
- ▶ Manual discharge zero delay time option
- ▶ Control Relay
- ▶ The countdown timer shows the time remaining to trigger
- ▶ FF O1000 Smoke Detector
- ▶ FF T1000 Heat Detector
- ▶ FF R1000 Manual release Call Point
- ▶ FF A1000 Abort Call Point
- ▶ FF ESF102 Siren and Beacon
- ▶ FF ES101 Siren
- ▶ REA 2G2 Integrated REASURE Remote Monitoring
- ▶ Alarms and Faults can be monitored from Mobile Phone



bsi.



Detector



Manual Release Call Point



Abort Call Point

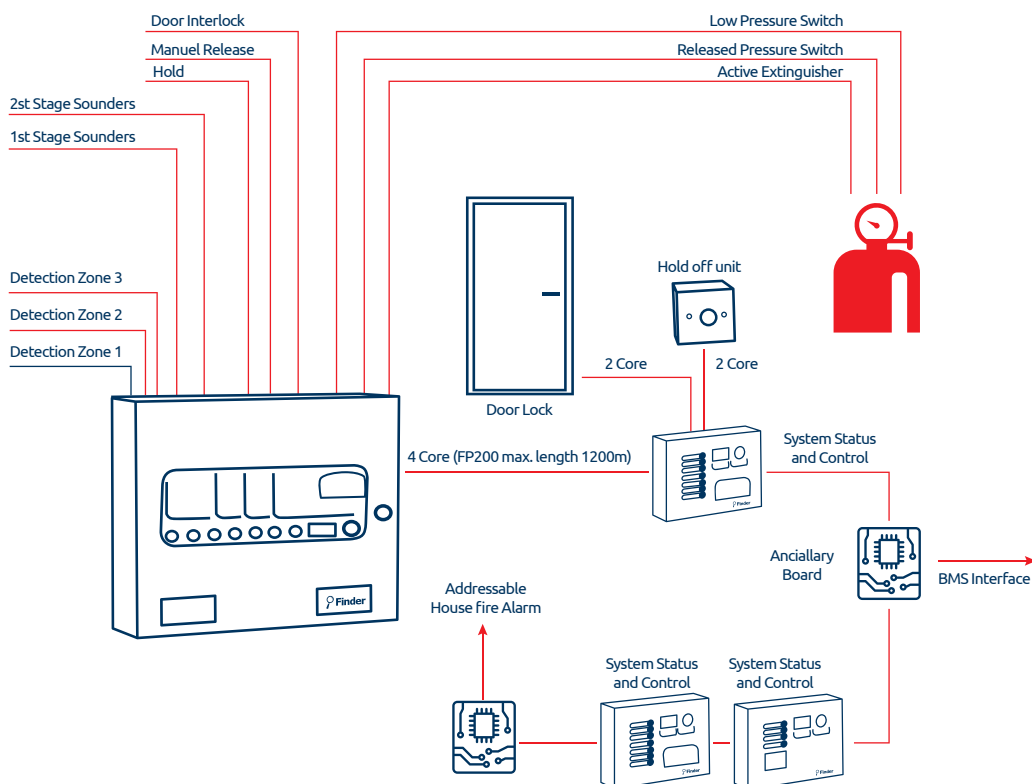


Electronic Sounder



Sounder Beacon

Field Products





Wireless Optical Smoke Detector SG100-IS (L-OP-SG)

- ▶ Suitable for Intrinsically Safe areas
- ▶ Two-way wireless communication
- ▶ Up to 8 years battery life
- ▶ 360 ° viewing angle
- ▶ EN54-7 and EN54-25 Standard
- ▶ ATEX certified
- ▶ LPCB Approved



Exproof Optical Smoke Detector FF DUR40EX

- ▶ Suitable for Intrinsically Safe areas
- ▶ 17 - 24V, 20mA
- ▶ ATEX Certificated
- ▶ EN 54-7 Standard



Wireless Fire Alarm Call Point SGCP100-IS

- ▶ Suitable for Intrinsically Safe areas
- ▶ Two-way wireless communication
- ▶ Up to 8 years battery life
- ▶ Resatable
- ▶ EN54-11 and EN54-25 certified
- ▶ ATEX certified
- ▶ LPCB Certificated



Exproof Heat Detector TUN38

- ▶ Suitable for Intrinsically Safe areas
- ▶ 17 - 24V, 20mA
- ▶ ATEX Approved
- ▶ EN 54-5 Standard
- ▶ ATEX certified



Suspended Ceiling Speaker FV HF-606 Fireproof

- ▶ Built-in 100V / 70V transformer
- ▶ 5 " - 6" Fireproof speaker - 0.75W - 9W options
- ▶ Ceramic Connector
- ▶ Thermalfus to
- ▶ Fire resistant rear enclosure
- ▶ Fire Resistant Cable
- ▶ ATEX certified



Exproof Flame Detector PPW-40EX

- ▶ Suitable for Intrinsically Safe areas
- ▶ Spark-proof separator
- ▶ Cleaning surface with quartz glass surface
- ▶ LED status indication
- ▶ ATEX certified



Multiband Flame Detector FLAME EXP

- ▶ Suitable for Intrinsically Safe areas
- ▶ 3 infrared sensors
- ▶ Maximum precision with microprocessor
- ▶ ATEX certified



Ip Bullet Camera IVEX-PL30

- ▶ Stainless steel case
- ▶ Suitable for Intrinsically Safe areas
- ▶ 1080px image recording
- ▶ HD real-time video
- ▶ 10x optical zoom
- ▶ Night Vision feature
- ▶ ATEX certified



Fire Alarm Call Point MCP1

- ▶ Stainless aluminum case
- ▶ Suitable for Intrinsically Safe areas
- ▶ Resatable
- ▶ ATEX certified



Multi Series LPG / Methane Gas Detector GF TC Exproof

- ▶ Flammable gas detector
- ▶ Suitable for industrial applications with IP65 protection
- ▶ ATEX certified
- ▶ A relay contact or 4-20mA / RS485 output in the alarm



Card Access Management Software

- ▶ Contactless Card Management System is an advanced access control and alarm management software.
- ▶ Database mirroring system, backup and import/export of the system increases the efficiency and safety.
- ▶ It has standard access control features. (Time zones, Access level, etc.)
- ▶ Many functions offered by Contactless Card Management System; password protection, anti-passback (global, local and timed interlock, countless levels of counters, controller message on screen)
- ▶ Elevator Control
- ▶ Visitor Management
- ▶ Access control / Personnel Attendance Control System / Guard Timer / Real time monitoring / Visual identification / Motion and alarm monitoring and control / Transition rights recognition / Multi-user support / Event memory



Control unit FA C2001.NET 1 Door 2 Readers FA C2002.NET 2 Door 4 Readers FA C2004.NET 4 Door 4 Readers

- ▶ TCP / IP Communication
- ▶ Online / Offline mode
- ▶ Flexible user privilege scheme
- ▶ Remote door opening, locking
- ▶ Changeable and printable report format
- ▶ Multi-user control
- ▶ Anti-passback and Anti-queue
- ▶ Interface locking
- ▶ Door lock control based on internal and external verification
- ▶ Wiegand 26-Bit
- ▶ 20,000 card capacity
- ▶ Optional elevator control



Control unit FA C2001 1 Door 2 Readers FA C2002 2 Door 4 Readers FA C2004 4 Door 4 Readers

- ▶ Communication RS-485
- ▶ Online / Offline mode
- ▶ Flexible door opening, locking
- ▶ Remote door opening, locking
- ▶ Changeable and printable report format
- ▶ Multi-user control
- ▶ Anti-passback and Anti-queue
- ▶ Interface locking
- ▶ Door lock control based on internal and external verification
- ▶ Wiegand 26-Bit
- ▶ 20,000 card capacity
- ▶ Optional elevator control



A300 Standalone Fingerprint Reader

- ▶ Personnel attendance control system
- ▶ 300 MHz high-speed processor
- ▶ BioNano core fingerprint algorithm
- ▶ Flexible user privilege scheme
- ▶ Waterproof and dust proof fingerprint sensor
- ▶ Real-time data transfer
- ▶ Online tracking
- ▶ Fingerprint capacity: 2000
- ▶ Recording capacity: 50000
- ▶ Identity speed: 0.5 seconds



VF30 Fingerprint Reader

- ▶ Wiegand 26 - Bit
- ▶ High performance and reliability
- ▶ BioNano core algorithm platform
- ▶ Non-scratch, unbreakable and durable
- ▶ Optical waterproof fingerprint sensor
- ▶ Standard fingerprint reader, optional RFID/Mifare/HID card reader
- ▶ RS485 for network connection, USB device and TCP/IP
- ▶ It is used directly to open the lock control door.
- ▶ Support realtime record download
- ▶ Online tracking
- ▶ Fingerprint capacity: 10000
- ▶ Recording capacity: 32000
- ▶ ID girl: 0.5 seconds



Fingerpint Readers

- ▶ Fingerpint reader
- ▶ RFID card reader
- ▶ 10 cm reading distance
- ▶ 12V



Card Readers RFID - Reader

- ▶ 125 KHz
- ▶ Wiegand 26-Bit
- ▶ 10 cm reading distance
- ▶ 12V

Wide Range of Card Reader Options



Functional Control Units

- ▶ Support RS485 or TCP/IP
- ▶ 100,000 instance memory
- ▶ 20,000 card recognition
- ▶ Different doors and readers connectivity options (1-2-4)
- ▶ Long time door open control
- ▶ Remote door opening
- ▶ Remote door locking
- ▶ Emergency locking
- ▶ Anti-passback and tail
- ▶ Opening a door with a double card
- ▶ Opening the door with electronic
- ▶ Card-Password-Super Password-enabled
- ▶ Emergency locking



Full Integration

- ▶ Integration possibility with CCTVsystem (Open protocol)
- ▶ CCTV IP Camera connection possibility (Open protocol)
- ▶ CCTV Video Server connection possibility (Analog camera)
- ▶ Unlimited camera connectivity
- ▶ Tracking: View / Record / Photo
- ▶ Wrong login auditing
- ▶ Door Opening monitoring
- ▶ Long time door open
- ▶ Alarm monitoring
- ▶ Card owner image verification
- ▶ Elevator control
- ▶ Visitors tracking

FG ACS ZY Visitors Management

- ▶ Entrance permissions
- ▶ Floor/Door permissions
- ▶ Time Control
- ▶ Area restriction
- ▶ Entry and exit records
- ▶ Identity recognition

FG ACS LIFT Lift Control Module

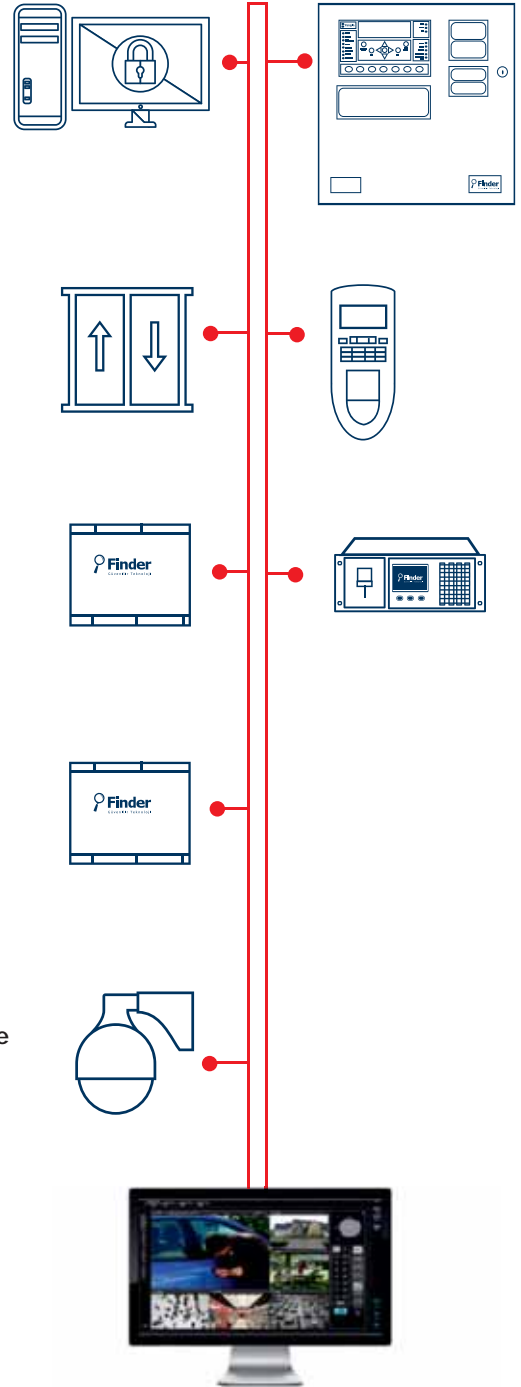
- ▶ Can control up to 128 floors
- ▶ Elevator Cabin card reader
- ▶ Floor permissions
- ▶ Programmable

FG ACS I/O Digital Input/output Module

- ▶ Communication over TCP/IP
- ▶ 10 Inputs
- ▶ 10 outputs
- ▶ Full integration
- ▶ Programmable

FG ACS I/Ox Digital Input / Output Module

- ▶ TCP/IP communication
- ▶ 12 entries
- ▶ 6 outputs
- ▶ Full integration
- ▶ Freely programmable



Building Security Systems Integration Software

- ▶ Flexible alarm scenarios
- ▶ Different branded CCTV system integration
- ▶ Remote monitoring from phones and tablets



► Fire Alarm Remote Monitoring Software

- AMC monitors the different branded of fire alarm control panels.
- AMC monitors alarmed area camera.
- AMC monitors and controls other mechanical and electrical systems.
- AMC notifies alarms and faults from smartphones, tablets, computers.
- AMC notifies the exact alarm location in the building plan.
- AMC notifies the route to building
- AMC notifies the contact details of the building authorities.
- AMC communicates through three GSM channels, Ethernet and Wi-Fi.
- AMC communicates with two servers; main and redundant.
- AMC reports maintenance activities, faults and alarm reports.

REA 8GEWRS Data Modem

- 8 Input
- 8 Output
- 24 Vdc Monitoring (Supply input)
- Battery backup against power failures (8 hours)
- RS232 Input Monitoring
- RS485 Input monitoring
- CANBUS Input Monitoring
- Extension Card monitoring and control (16 input 8 Out.)
- 2G / 3G / 4.5G communication
- Redundant operation with 2 GSM operator (Dual Sim card etc.)
- Automatic switching between 2 GSM operators
- Wireless communication with RF module (optional)
- GSM Signal Level monitoring
- SMS reporting
- Remote or configuration with USB / RS232 and Web



REA 2G3 Data Modem

- 3 Server communication
- RS232 Data Connection
- SPI Connection
- 2G communication
- Redundant operation with 2 GSM operator (Dual Sim card)
- Automatic switching between 2 GSM operators
- Remote configuration
- Adjustable test signal
- Small structure can be connected into fire control panel
- Adjustable Alarm Signal Repeat
- Adjustable Fault repeat Signal
- AES128 end-to-end encryption (optional)
- SMS Sending (optional)
- Battery backup (optional)
- 3 Input 1 OutPut



REA and Modules

- REA Z8 8 Zone / 16 Input Module
- REA Z8 O8 Relay Output Module
- REA Z8 RS232 232 Connection Module
- REA Z8 RS485 485 Connection Module
- REA 16IN4O 16 Input 4 Output Module





REFERENCES



Istanbul Aksaray Vergi Dairesi



Kentplus Centrium Residence



Brandium Alışveriş Merkezi



Hilton İstanbul Kozyatağı



Brandium Residence



Prestige Mall Alışveriş Merkezi



G Plus



Ottomare Suites



Karden Avenue



Silence İstanbul Otel ve Kongre Merkezi



Crystal Nirvana Clup Hotel



Club Ali Bey Side



Maxx Royal Hotel Belek



Golden Savoy Hotel & SPA



Rubi Platinum Hotel & Spa



Kayseri Havalimanı



Crystal Waterworld Resort & SPA



Kars Havalimanı



Balıkesir Havalimanı



Antalya Akvaryum



Adopen Antalya

► www.finder.com.tr

